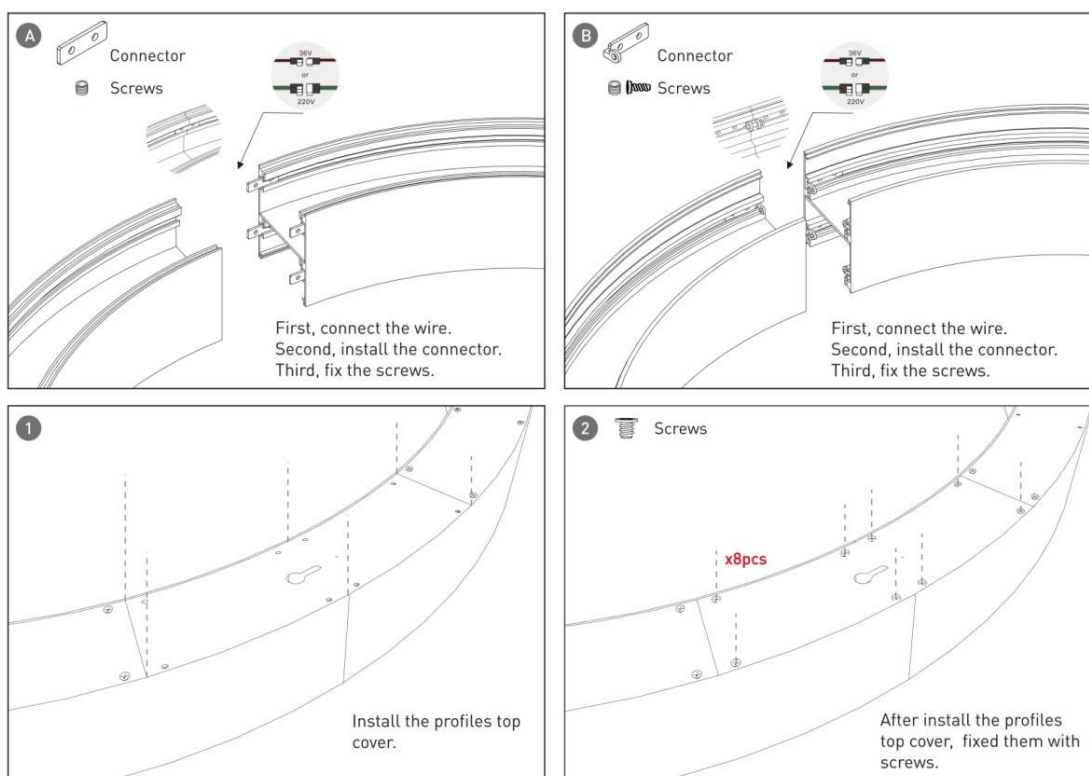
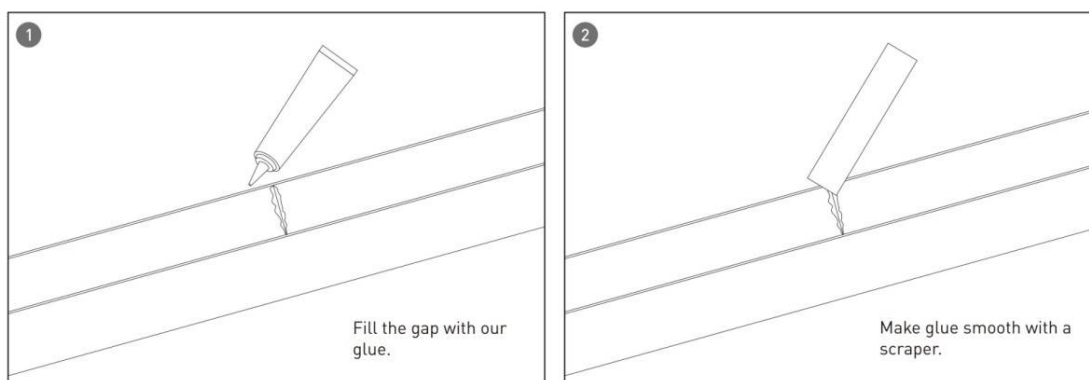


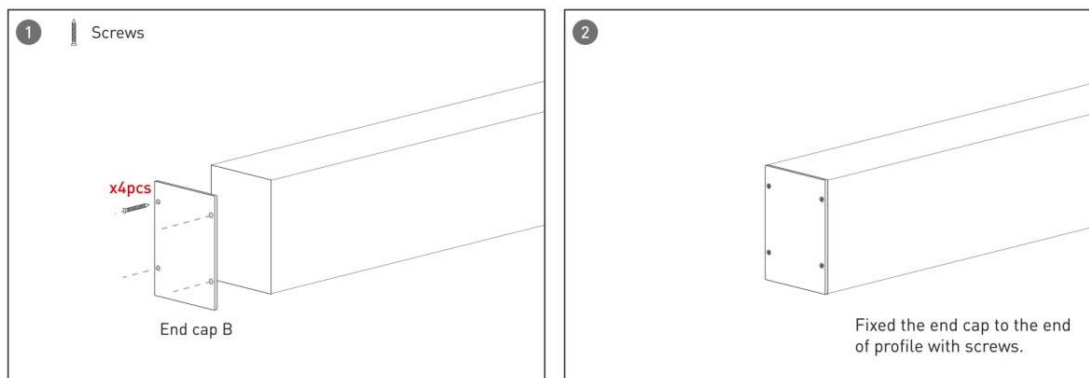
Installation-Profile connection



Installation-Cover

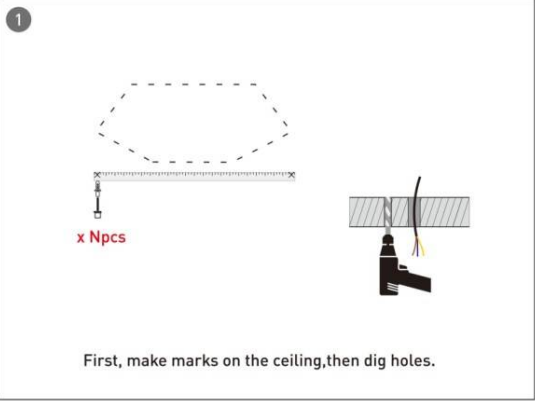


Installation-End cap



Installation-Screws ceiling


1



x Npcs

First, make marks on the ceiling, then dig holes.

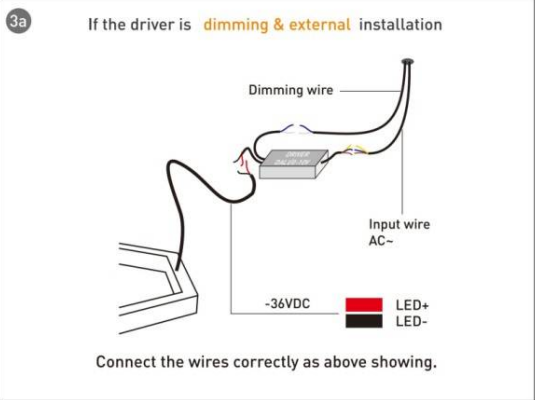
2



The lamp top cover.

3a

If the driver is **dimming & external** installation



Dimming wire

Input wire AC~

-36VDC

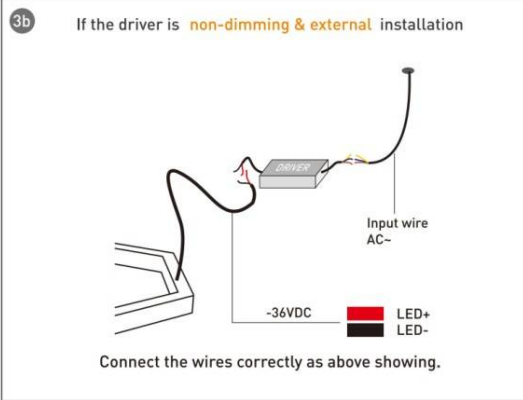
LED+

LED-

Connect the wires correctly as above showing.

3b

If the driver is **non-dimming & external** installation



Input wire AC~

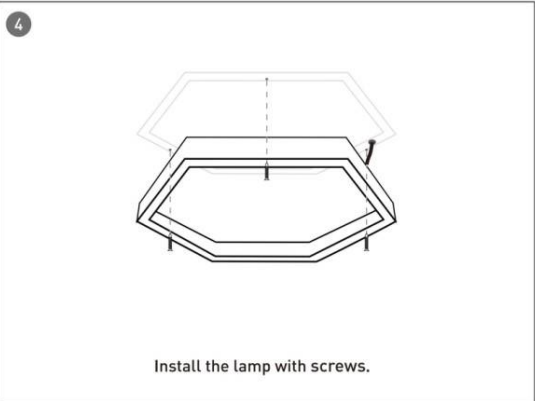
-36VDC

LED+

LED-

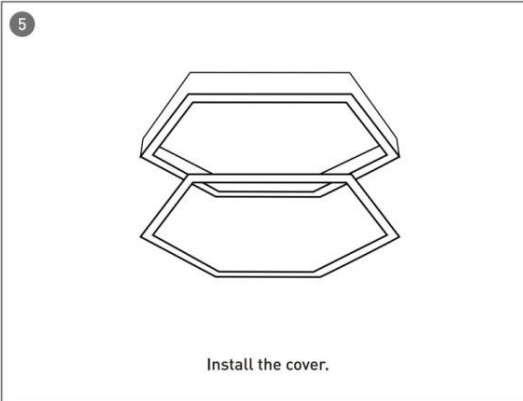
Connect the wires correctly as above showing.

4



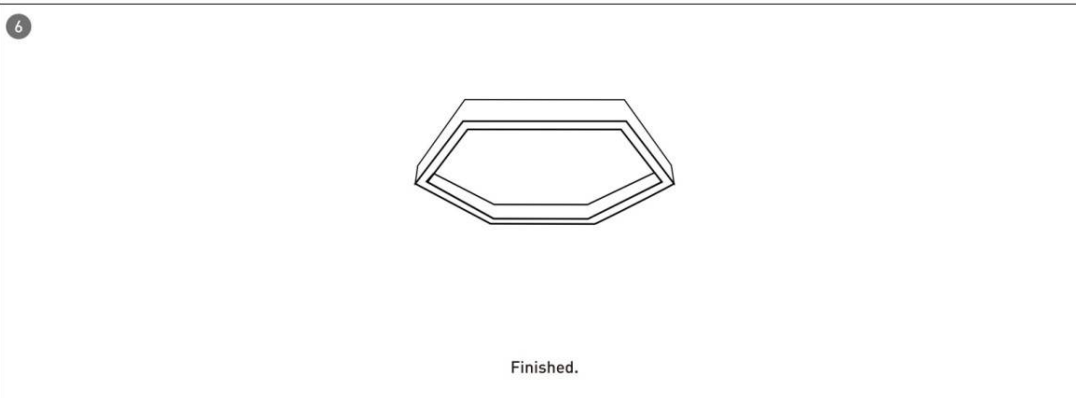
Install the lamp with screws.

5



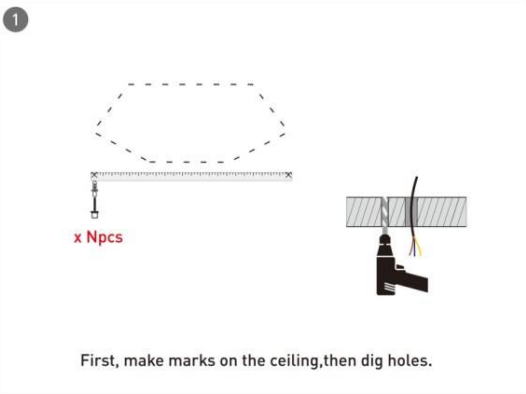
Install the cover.

6

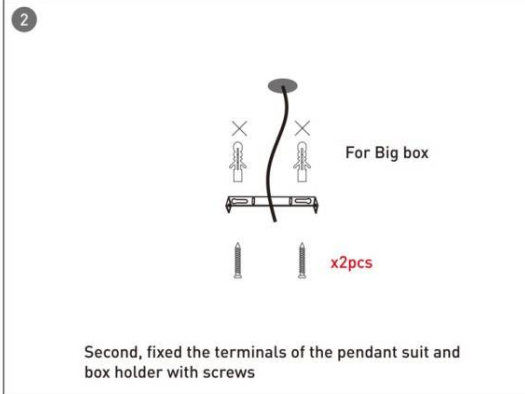


Finished.

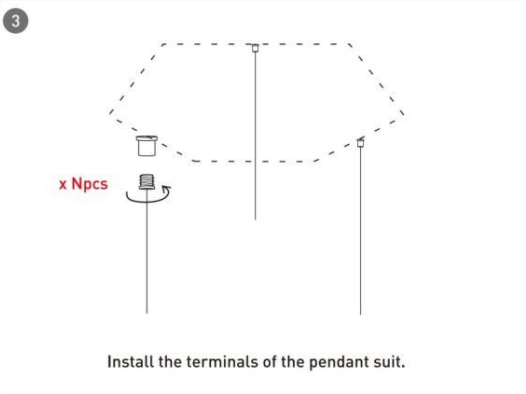
Installation-Pendant with ceiling box

1


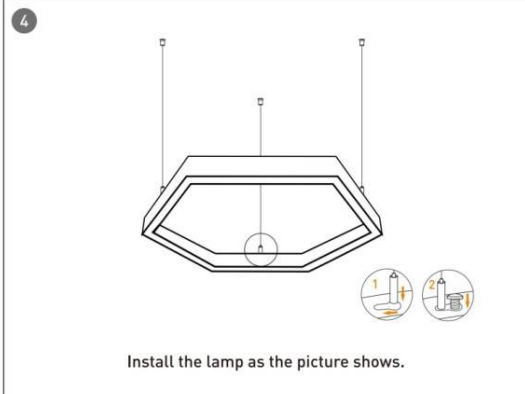
First, make marks on the ceiling, then dig holes.

2


Second, fixed the terminals of the pendant suit and box holder with screws

3


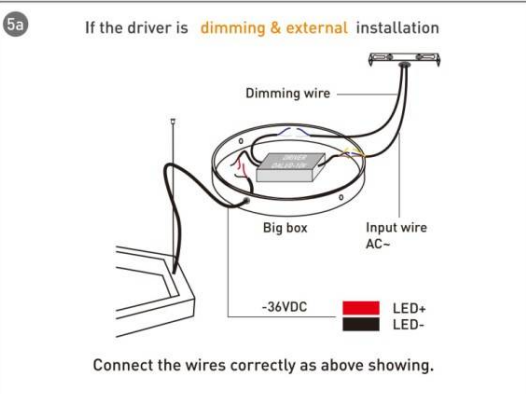
Install the terminals of the pendant suit.

4


Install the lamp as the picture shows.

5a

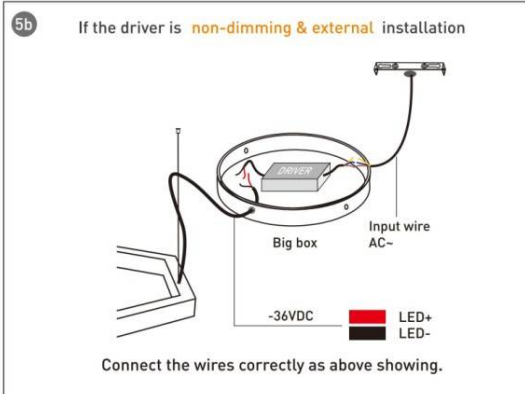
If the driver is **dimming & external** installation



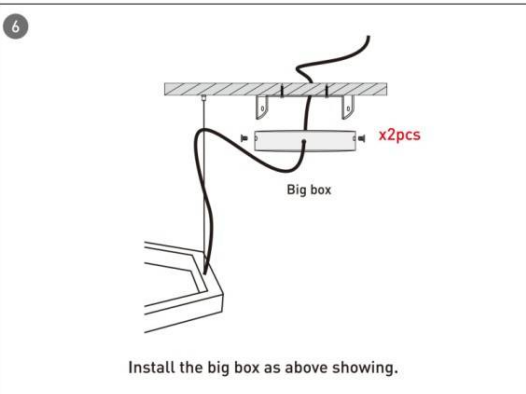
Connect the wires correctly as above showing.

5b

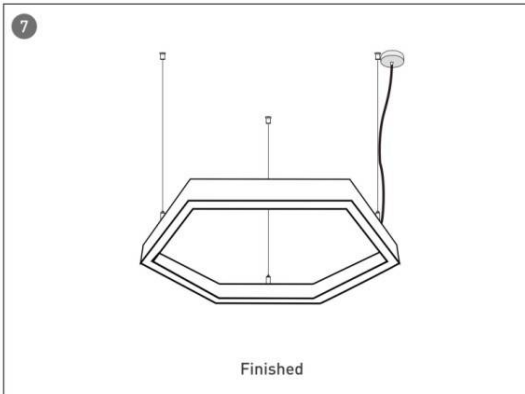
If the driver is **non-dimming & external** installation



Connect the wires correctly as above showing.

6


Install the big box as above showing.

7


Finished

Installation-C Clip ceiling

1

First, make marks on the ceiling, then dig holes.

2

The lamp top cover.

3

Install the clip on ceiling.

4

Install the lamp as above showing.

5a

If the driver is **dimming & external** installation

Connect the wires correctly as above showing.

5b

If the driver is **non-dimming & external** installation

Connect the wires correctly as above showing.

6

Finished.